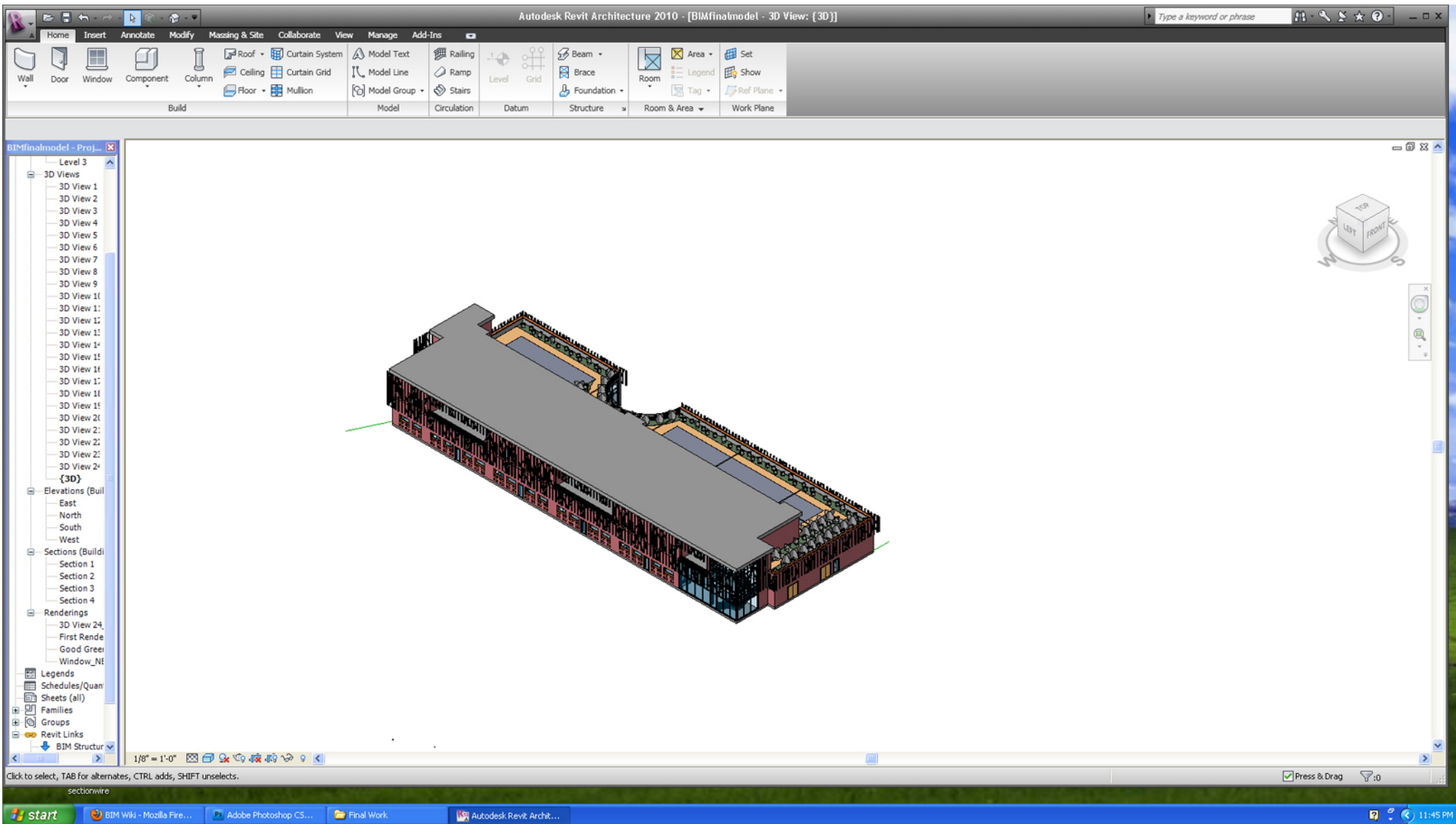


Abstract.

This is a step by step guide to help you understand how to export a Revit model into SketchUp.

These steps begin once you have your model open in Revit 2010

Step 1: Open Model

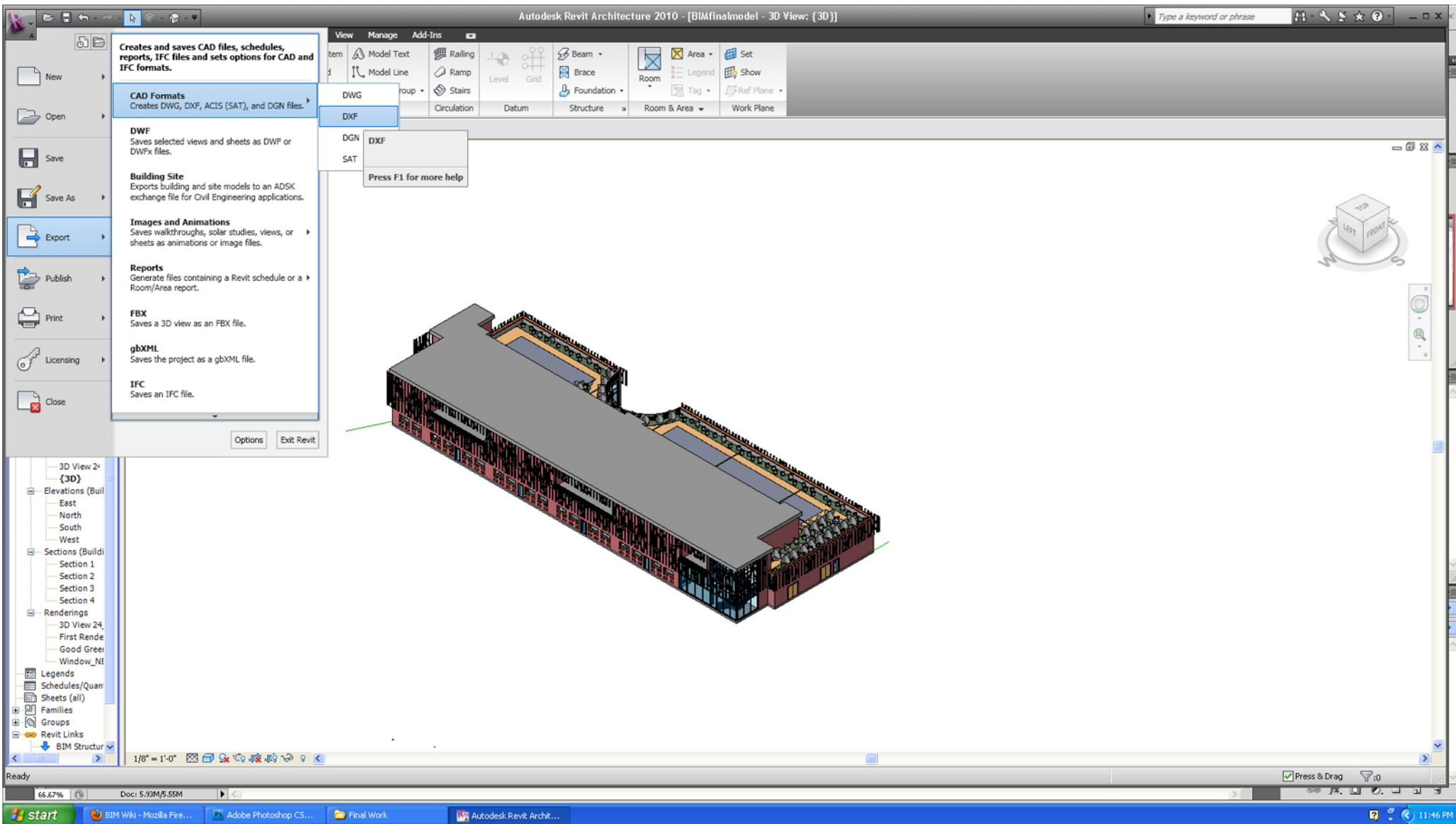


Step 2:

From the Revit menu select the export tab.

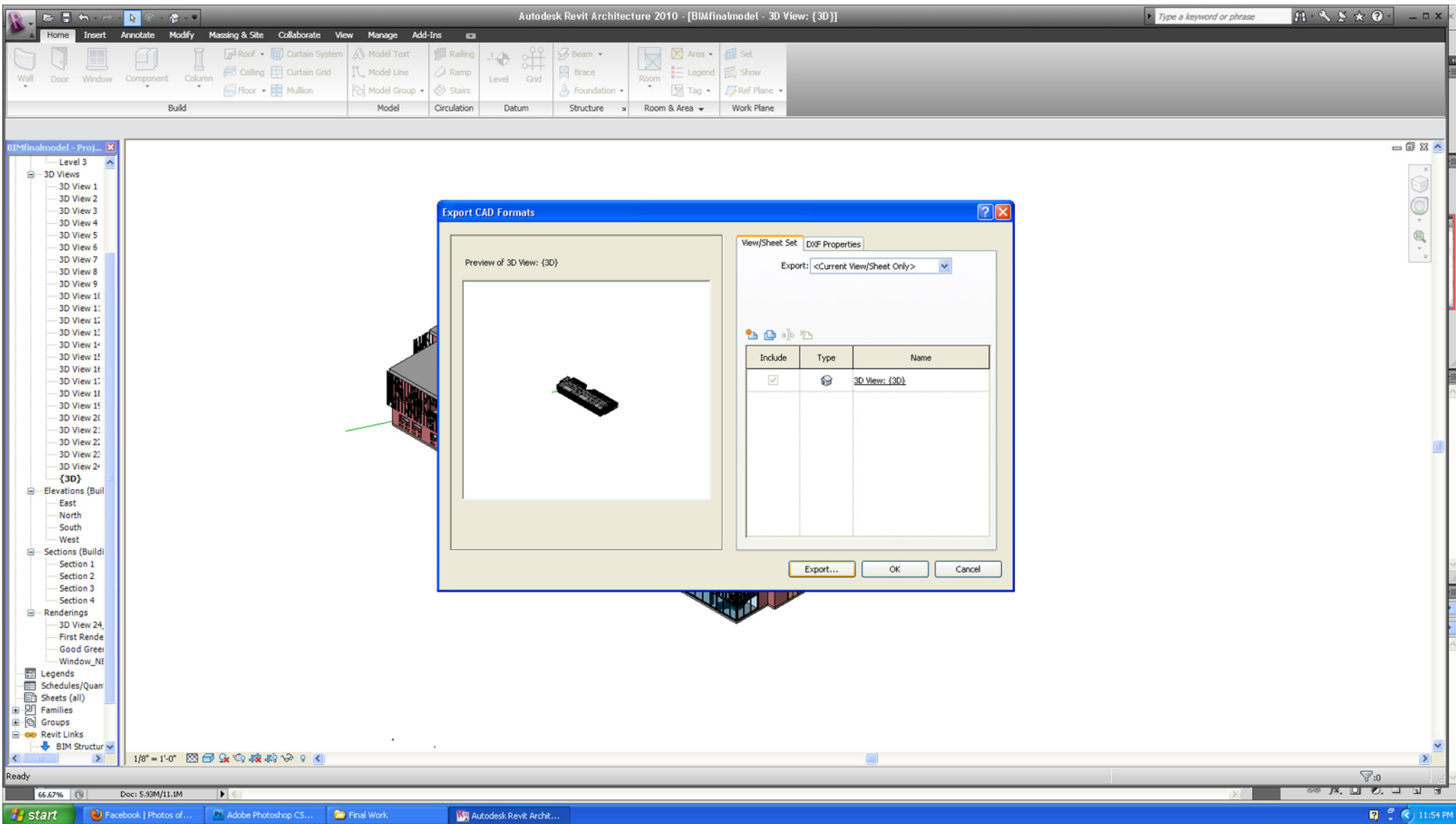
From the export tab select CAD formats

From the CAD formats tab select DXF



Step 3:

The Export CAD formats window will appear, do not change the defaults
Select Export

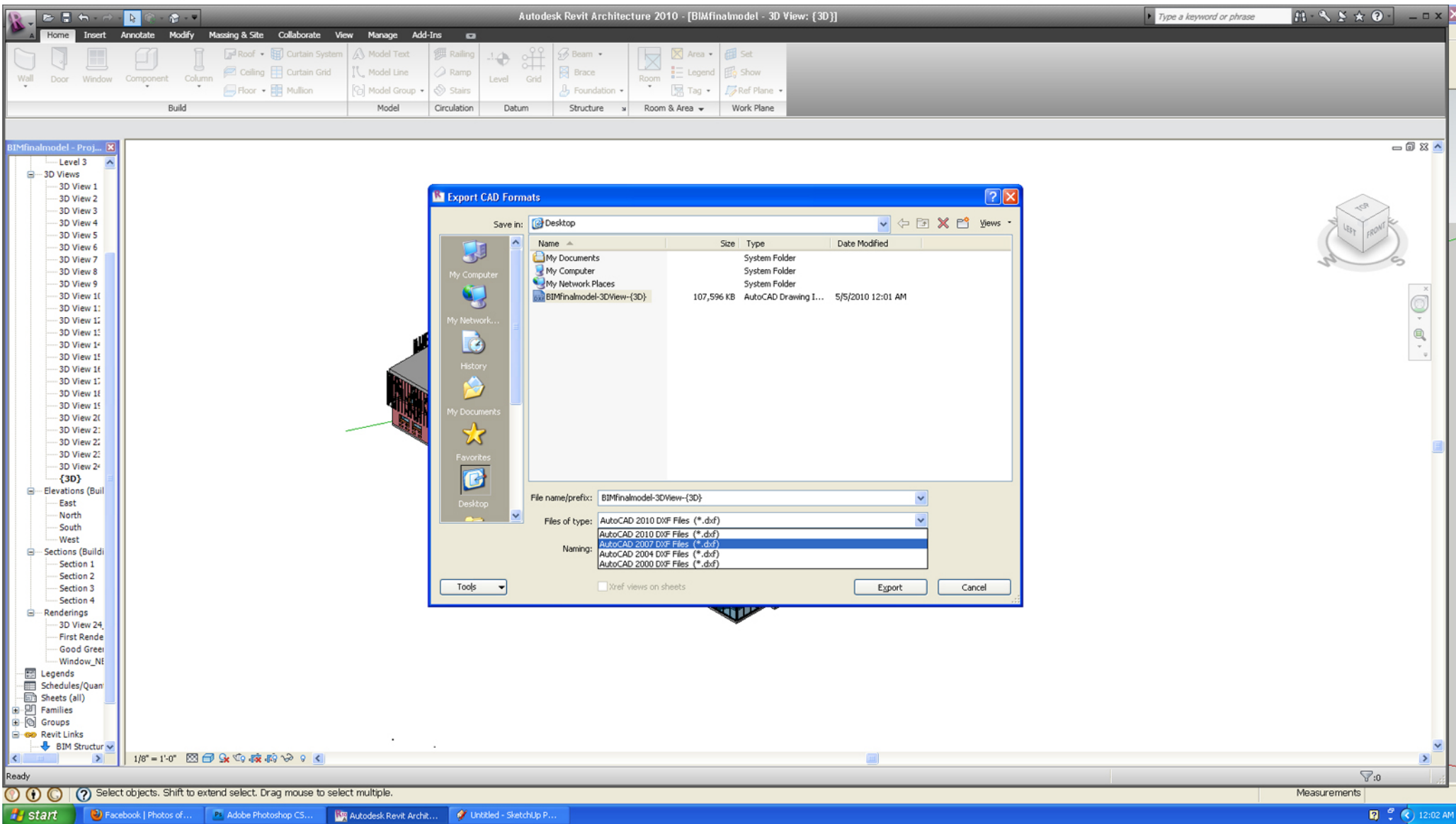


Step 4:

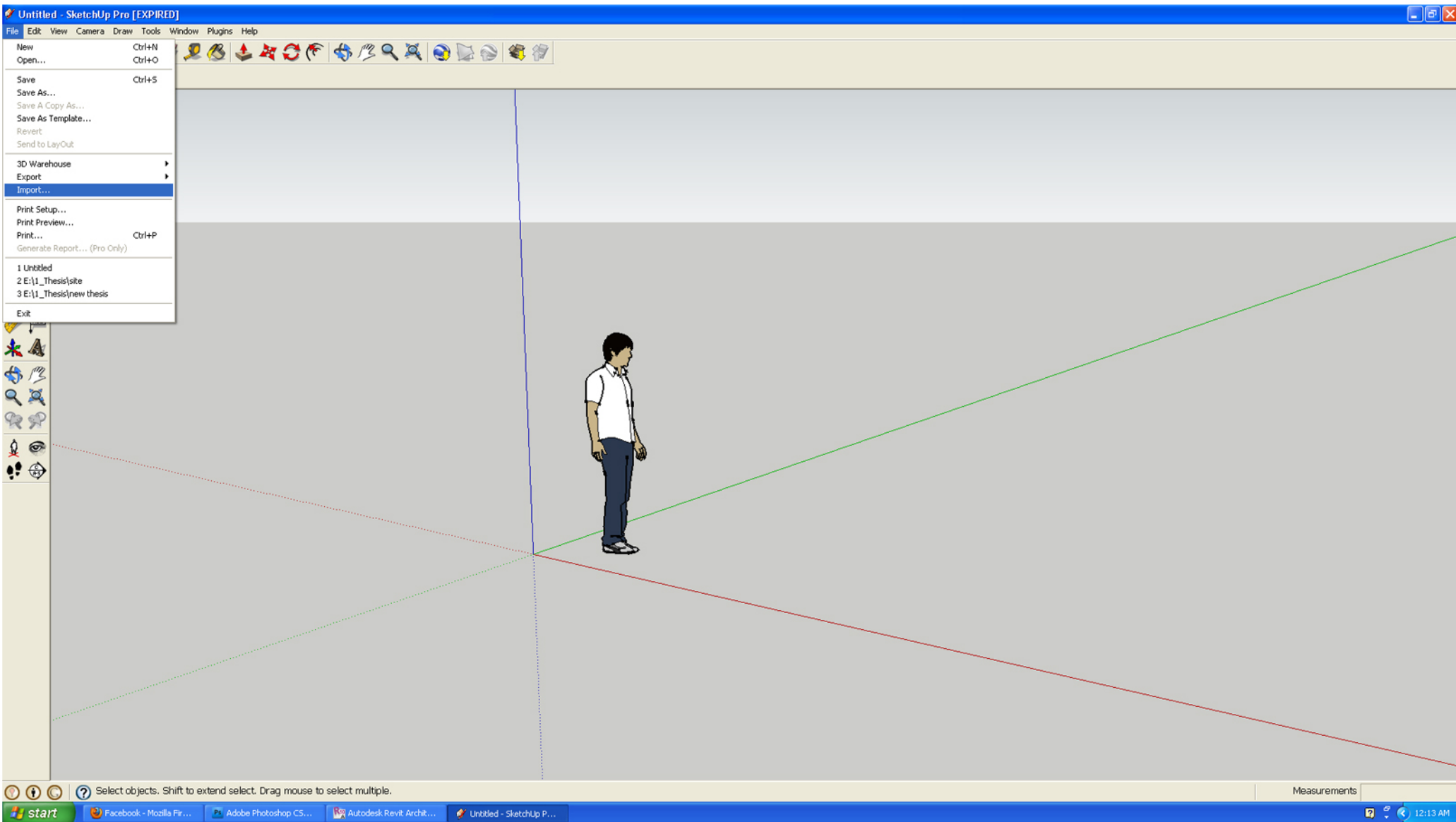
The next Export CAD formats window will appear

Select the files of type tab and select AutoCAD 2007 DXF Files

SketchUp will not import 2010 dxf files



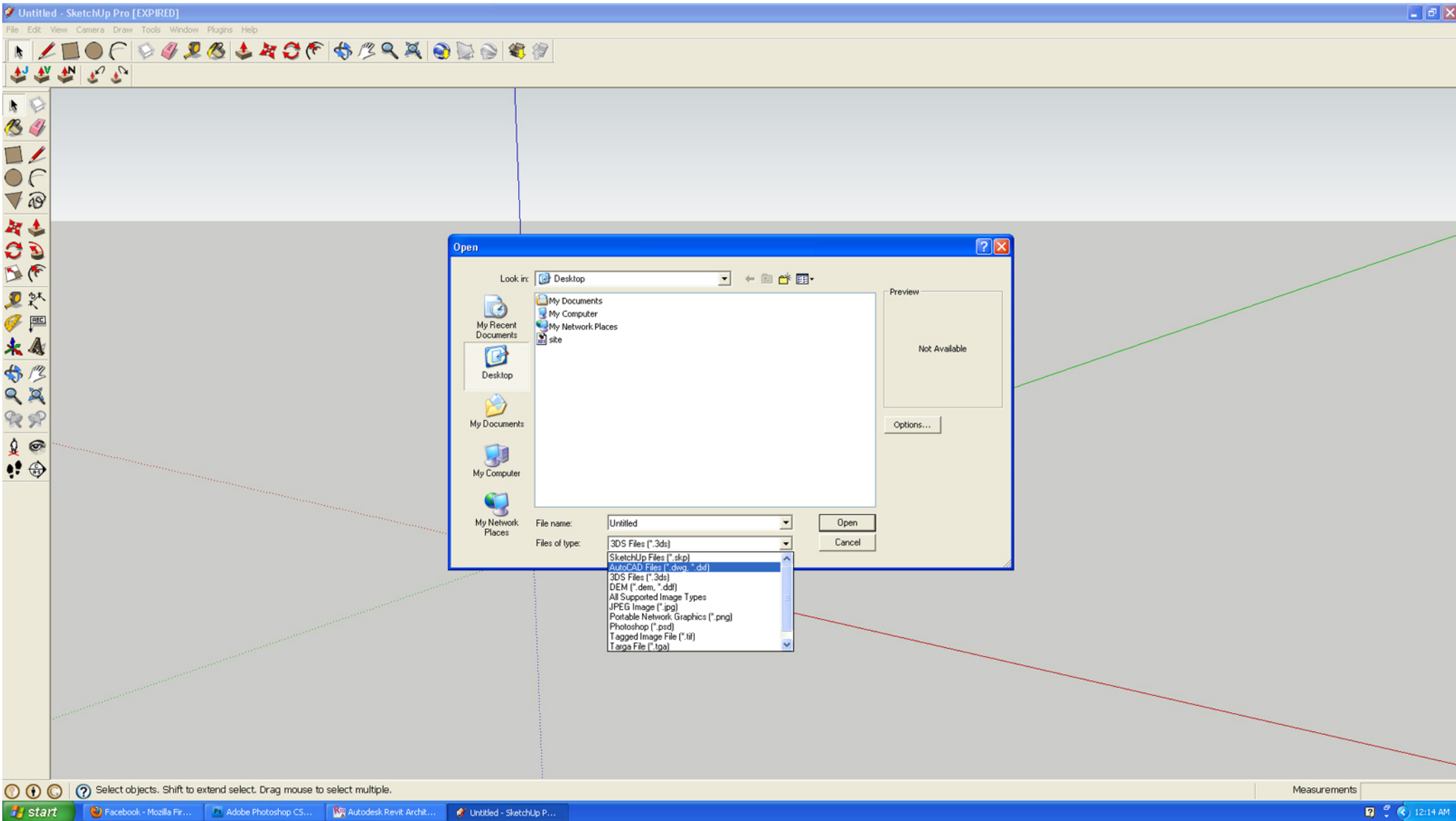
Step 4:
Open SketchUp
Select the file tab
In the file tab select the import tab



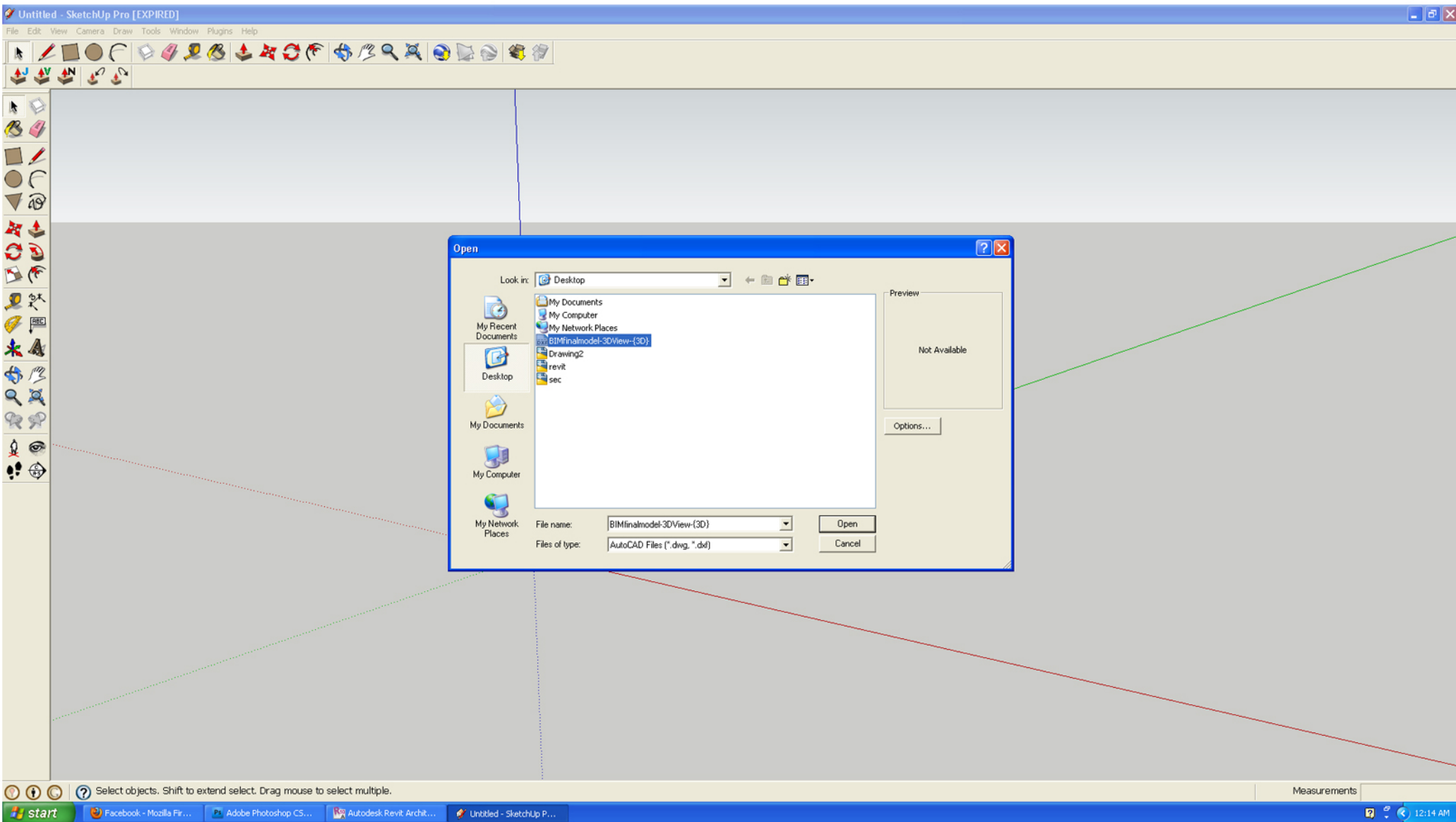
Step 5:

The Open window will appear

In the files of type tab select AutoCAD files



Step 5:
Highlight the DXF file you exported from Revit.
Select Open



Step 6:

Your Revit Model will be imported to SketchUp and is ready for manipulation

